

Deluxe Naal
NALX

Caring for your **banjira™ Naal Heads**

Here are some simple tips to care for your Naal Heads.

- Use a dry soft cloth for dusting
- Use a damp soft cloth for cleaning
- Avoid extreme temperatures
- Avoid extremely dry conditions
- Avoid water and high humidity
- Avoid using abrasives

Accessories

Drums and accessories
are available at
www.ensoulmusic.com



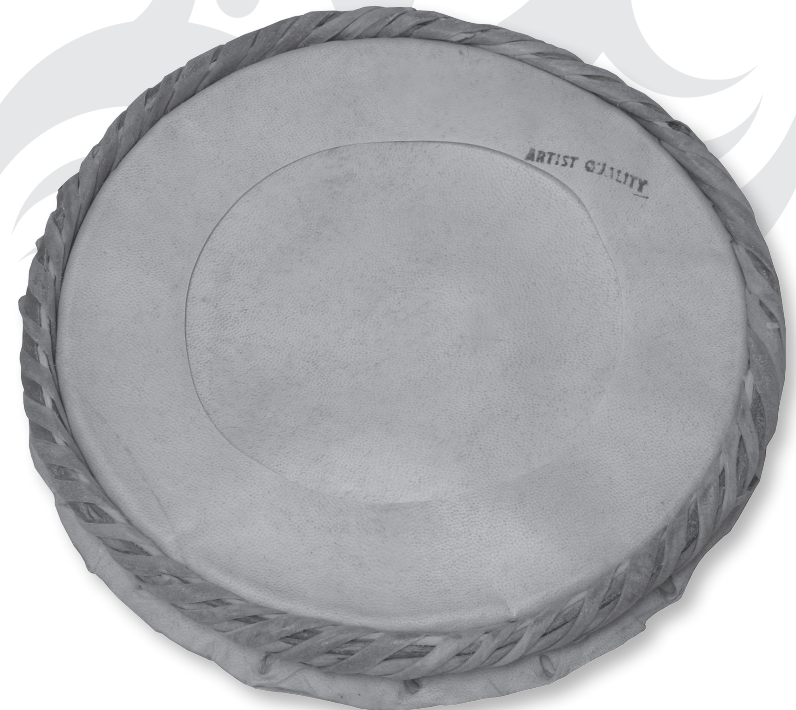
EnSoul
MUSIC DESIGNS

www.ensoulmusic.com

© Copyright 2017. Mid-East Mfg. Inc.
Naal Heads

banjira™

NAAL HEADS



– OWNER'S GUIDE –

banjira™ Naal Heads

Head Sizes

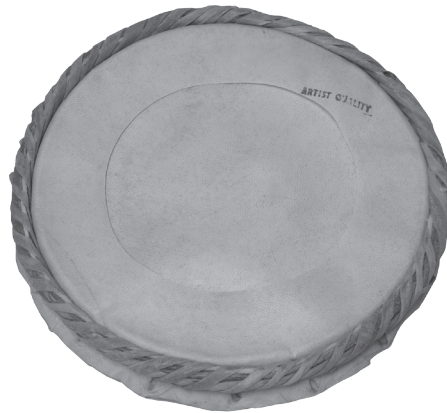
Make sure your heads are fitted properly to your drum shell.

Measurements for heads reflect the outer diameter of the drum shell, from the outside lip to opposite outside lip. If your drum still has the old head in place, then estimate this measurement. On the bass head it will be the diameter, on the head, from the inside edge of the braid to the opposite inside edge of the braid. On the tenor head it will be the diameter from the inside edge of the stitching to the inside edge of the stitching on the opposite side.

banjira™ Naal Heads

Bass Head

The bass naal head usually has an internal load that adds depth to the sound. When it is applied in India, this load is a dark green-black gob. The head you received may have this gob in place. However, for longevity, ease of instillation and sound we recommend replacing the original gob with a layer of silicone caulk. If you have to remove the Indian gob, carefully scrape it away. Something hard, without sharp edges, like a plastic scraper, works well. Then apply the silicone. You want to get a permanently flexible caulk. Silicone caulk can be obtained at any hardware store. Squeeze a walnut or golf ball size dollop onto the inside center of the head. Then spread it out so that it covers the middle third of the head and is about 1/4" thick. Do this in a well ventilated area. Let the head rest until the caulk dries completely. Then mount your head as usual.



banjira™ Naal Heads

Tenor Head

The tenor naal head has a black gob, or syahi (pronounced cee-hi) on the outer, playing surface. This syahi is a unique combination of organics and iron. If you look closely you will see rings, like the growth rings of a tree. The syahi is applied in layers, each one successively smaller than the layer before. Polishing finishes the process. This external load is very sensitive to moisture.

Players will often use talc powder on their hands to limit the moisture. If the syahi gets wet, or begins to flake off, the entire head must be replaced. Some players prefer a smooth tenor head without the syahi.

