



HARPS



— OWNER'S GUIDE —

Roosebeck Harp Before You Play

Harps are shipped de-tuned, to reduce the chance of shipping damage.

Tuning adds tension which changes the structure of the harp and stretches the strings. Because of this, a new harp will require frequent tunings in the first few weeks. Regular tuning for several months will develop the harp's bright voice.

With time, tonal stability will increase.

Tuning Pins *Roosebeck* Harp

Harp tuning pins are tapered. They must be pushed in for a secure hold. As you turn the tuning pin, push inward. This will seat the pin securely in the arm of the harp. Only use enough pressure as necessary.

Tuning the *Roosebeck* Harp

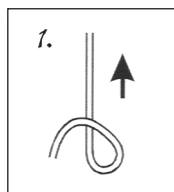
Before tuning, make sure each string rests securely in the notch at the end of the bridge pin. Disengage the sharpening levers, by flipping them down. Visually confirm none of the strings rests against any part of the levers.

To ensure you are in the correct octave, use a piano or an electronic tuner for reference. Tune your strings working from the longest to the shortest. Begin by tuning the Red, 'C' strings. Next, tune the Blue, 'F' strings. Finally, tune the clear strings. This method evenly stretches the sound board.

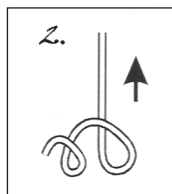
Engage the sharpening levers and test each string. If necessary, adjust bridge pins and levers to achieve the proper $\frac{1}{2}$ note intonation. When bridge pins and levers are mounted together, adjust them as a unit. If the bridge pins are not fixed, pull the bridge pin out with pliers for less intonation (the string moves away from the Lever's pole) and push it in for more (string moves toward the pole). The levers can also be moved up or down for intonation adjustment.

Replacing Strings

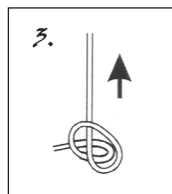
Thread a new string through the soundboard. Tie a knot in the bottom of the string (figs 1-7) and pull the string so the knot is tight against the inside of the soundboard.



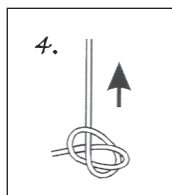
1. Make a big loop



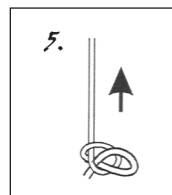
2. Make a small loop.



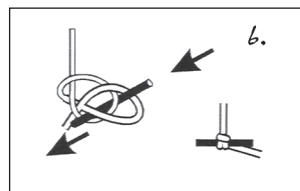
3. Insert the small loop into the big loop



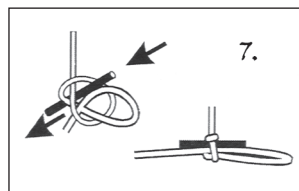
4. Carefully pull the string around the small loop



5. Tighten the string so the big loop closes over the small loop



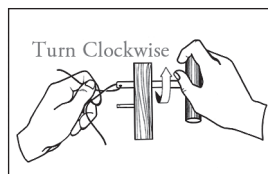
6. For a thin nylon string, reinforce the knot by weaving a brace through both parts of the knot and pull tight



7. For thicker gut strings, weave a brace through only one part of the knot and pull tight, leaving the slip knot

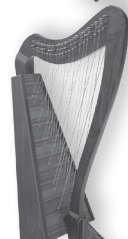
Secure to the Tuning Pin

With your tuning key, turn the pin until the hole is straight up and down. Thread the string through the tuning pin. Pull on the string as you turn the tuning key clockwise, turn until tight. Push the string in the groove of the bridge pin. As you turn, be sure the string is winding, without overlapping, towards the harp. When the proper pitch is reached, trim the end of the string to about half an inch.



HBLAZT - Balladeer Harp™

22 Strings, 22 Levers - 30"
Tuning from Low to High:
G3 - G6
Use String Set RBSHS22G



HCTA - Caitlin Harp™

Cross Strung Harp, 38
Strings, No Levers - 35"
Tuning from Low to High:
C3 - C#6, Natural & Sharp
notes
Use String Set RBSHS38CS



HTHA - Heather Harp™

22 Strings, 22 Levers - 36"
Tuning from Low to High:
C3 - C6
Use String Set RBSHS22C



HMNA - Minstrel Harp™

29 Strings, 24 Levers - 38"
Tuning from Low to High:
C3 - C7
Use String Set RBSHS29C



HPXA - Pixie Harp™

19 Strings, 19 Levers - 31"



HWL26 - Woodlands Harp™

26 Strings, 26 Levers - 36"
Tuning from Low to High:
F3 - C7
Use String Set RBSHS26F



HP22 - Parisian Harp™

22 Strings, 22 Levers
- 36"
Tuning from Low to
High: C3 - C6
Use String Set RBSHS22C



HMGA - Meghan Harp™

36 Strings, 31 Levers - 52"
Tuning from Low to High:
C2 - C7
Use String Set RBSHS36C

Roosebeck Harp

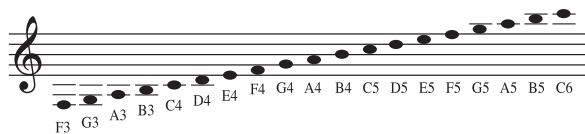
Instrument Care

Adjacent strings may break if a missing string is not replaced promptly. Only use the strings suggested by the manufacturer. Improper strings may damage the harp. Use a dry soft cloth for cleaning. Avoid extreme temperatures. Consider purchasing a soft, padded gig-bag in which to store and transport your harp. They are available online at www.ensoulmusic.com

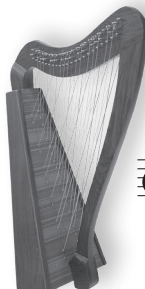
Roosebeck Harp Scales



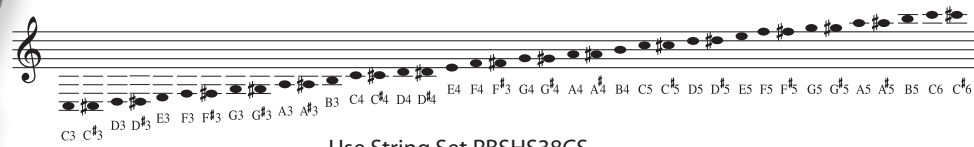
HPXA - Pixie Harp™, 19 Strings, 19 Levers - 31"



Use String Set RBSHS19F



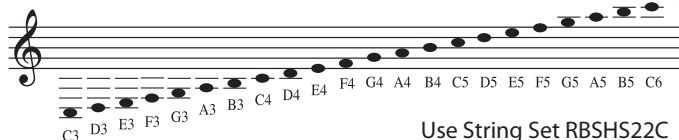
HCTA - Caitlin Harp™, Cross Strung Harp, 38 Strings, No Levers - 35"



Use String Set RBSHS38CS

HTHA - Heather Harp™, 22 Strings, 22 Levers - 36"

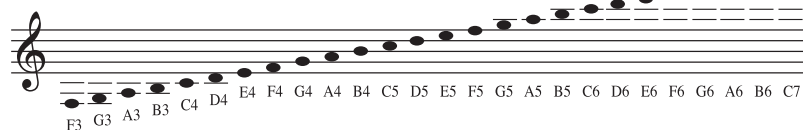
HP22 - Parisian Harp™, 22 Strings, 22 Levers - 36"



Use String Set RBSHS22C



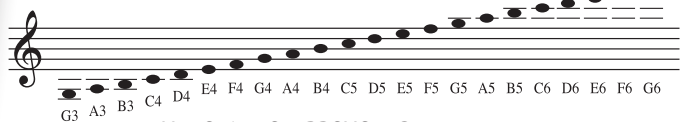
HWL26 - Woodlands Harp™, 26 Strings, 26 Levers - 36"



Use String Set RBSHS26F



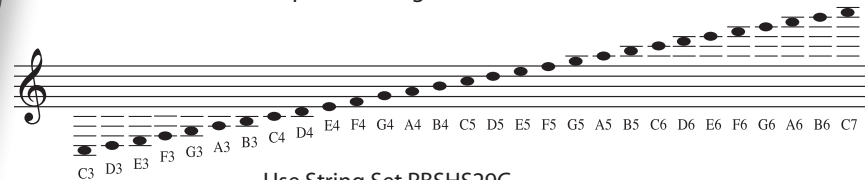
HBLAZT - Balladeer Harp™, 22 Strings, 22 Levers - 30"



Use String Set RBSHS22G

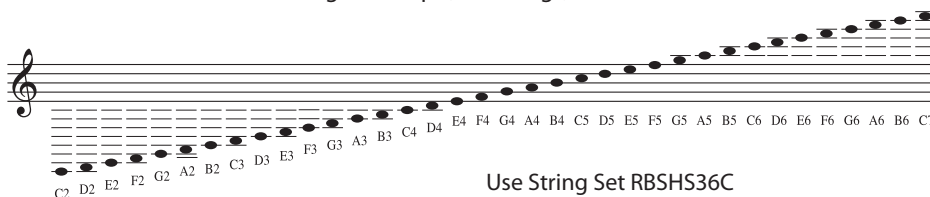


HMNA - Minstrel Harp™, 29 Strings, 24 Levers - 38"



Use String Set RBSHS29C

HMGA - Meghan Harp™, 36 Strings, 31 Levers - 52"



Use String Set RBSHS36C

